

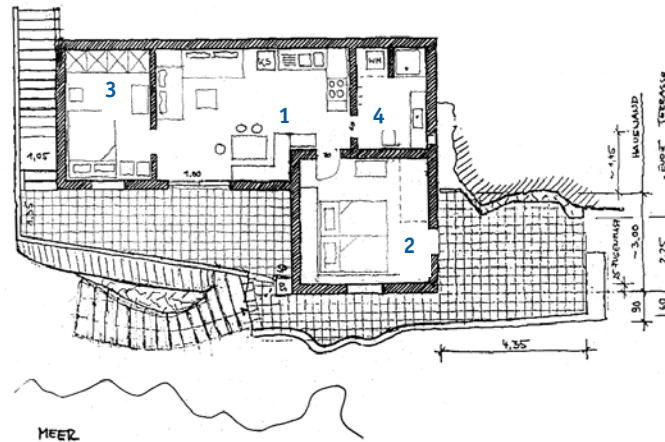


Location

The house 'Casa Cari' is situated on the sea front of a small fishing village "Puerto de la Cruz" locally known as "Puertito" which in turn lies at the southern most tip on the island of Fuerteventura. This southern peninsula is surrounded on three sides by the sea and the whole area has been designated as a natural park. This means that the coast and the inner landscape remain unspoilt and untouched by modern development, industry, commercial tourism and it's associated infrastructure etc.

"Puertito" is a small, sleepy seaside fishing village normally very peaceful and quiet, however, during summer holidays, bank holidays and some weekends, there can be an influx of canarian locals who come to enjoy the fishing, beach-life and the local kitchen in one of the village's three bar-restaurants. At these times the village will be more lively but this need not effect the peace and quiet of guests staying at 'Casa Cari'. The house lies in a very protected location and one hardly notices anything else but the sound of the sea. Because the house is south facing it gets the sun all day long and you can enjoy undiminished views of the sea from the terraces, bedrooms or living room. There is usually a little sandy beach underneath the terraces - a set of steps leads directly from the terrace to the beach - however during periods of rough weather and strong tides this little sandy beach can disappear. This mostly occurs in winter time.

The house is faced with a sandy coloured natural stone helping to blend itself into the character of the region. Inside the house consists of two bedrooms; a big living room cum kitchen (fully equiped) (1), with sitting and eating corners; a bathroom with shower w.c. as well as two outside terraces from which there is direct access to the beach via steps. The total extent of the area is 70 sq meters approx. From the large bedroom one can enjoy a lovely view over the unspoilt bay - from bed, literally! As well as the king size double bed there is a single matrace for another person (maybe a child?) to share the room if requi-



red.(2)
Out on **the terraces** there are sun-loungers, two deck-chairs and a set of teak table and chairs. The front door/gate of the terrace may be locked - an important consideration where small children are concerned. The flooring is marble terrazzo and terracotta tiles throughout.

The **smaller bedroom** has a double bed, a large built in wardrobe/cupboard and a lovely view to the open sea. (3)



The **kitchen** consists of a gas cooker with oven (bottle gas). A large combination fridge freezer, plenty of pots, pans, dishes, plates, cups etc. and all the cutlery you will need.



The **living room** is combined with the kitchen. It has a radio-tape-CD player and Sat-TV. (1)



The **bathroom** consists of a little bath tub with a shower head connection to a hot water boiler plus a washing machine and W.C. (4)

Energy and water system
A wind powered generator and desalination system provides the village with a supply of clean fresh water and electricity.



The longest beach within close proximity is located just outside the town of "Morro Jable" and extends for more than 20 km to a place called "Costa Calma". This is a perfect golden sandy beach with shallow lagoons along its length and is generally very safe for swimming. There is also wind surfing with facilities

for beginners. A personally favoured beach is a mere 10 minutes walk away from "Puertito". The "Playa del Ojos" is one of a few picturesque bays on the west side of the peninsula. You're almost certain to have it for yourself!



Puertito

Morro Jable

Surfing

For the experienced surfer there are many outstanding possibilities in the immediate vicinity of "Puertito".

Fishing

Fishing possibilities are numerous and varied all around "Puertito" and the surrounding peninsula. Deep sea fishing is offered from the main harbour in



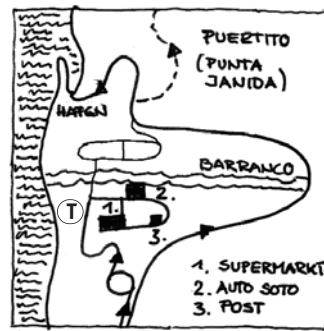
Journey to Fuerteventura

By direct flight to Fuerteventura airport. Then by car to "Puertito" – there is no public transport to "Puertito". There are several car rental firms at the airport (Auto Soto 0034.928.540142 / Auto Dominguez 0034.938.860516) you may also be able to make your own arrangements from home.

After leaving the airport you follow signs for "Morro Jable" / "Jandia" in a southerly direction. When you get close to "Morro Jable" you will pass many hotel blocks and shopping arcades.

The main road then sweeps up a steep hill. At the top of the hill the road divides, the left hand lane taking you into the town of "Morro Jable" and the right hand lane – which you stay in – will eventually lead to the harbour.

**Airport
Puerto Rosario**



Morro Jable

Before you reach the harbour there is a right turn (the only one) which is signed for "Punta or Faro de Jandia". The road is made of sand/gravel and goes for approximately 20 km to "Puertito". Once on this road keep left at the only junction which occurs (signed "Restaurante Cofete").

Less than 1 km from "Puertito" the road suddenly becomes tarmac. When you pass a large wind powered generator on your left you drive off the road and into the village where you will find the houses somewhat scattered in their arrangement. You then drop into "Bar El Caletón" where you may pick up the keys from 'Pepe' or 'Dolores'. You should have driven about 1,5 hours and now you may relax and enjoy this surreal place at the end of the world and let your soul recover in timelessness.

Buchung und Information im Internet unter: www.casa-cari.com

Deutschland Tel. 0049.30.3136711 Fax 0049.30.31506244

Irland Tel/Fax 00353.94.9548112 e-mail: info@casa-cari.com

Sun, Wind & Sea

in Puertito

on Fuerteventura



Casa 'Cari'